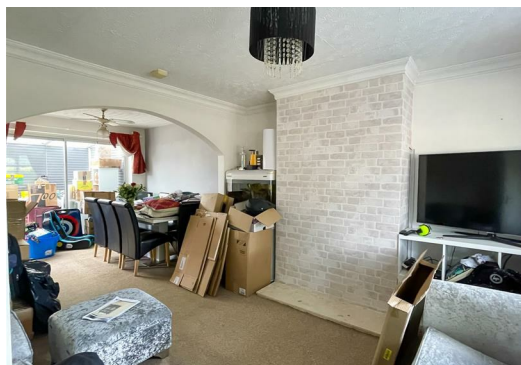




Shanklin Gardens, Leicester Forest East

Leicester, Leicestershire, LE3 3JR

£750 PCM



Newton Fallowell presents a three bedroom townhouse located in Leicester Forest East. Benefiting from gas central heating, double glazing, rear garden, and garage. Offered on an unfurnished basis. Available 19th September 2022.

Rent £750.00 / Deposit £750 protected with the DPS / EPC rating D / Council tax band B - Blaby / 12 month initial tenancy term /

ACCOMMODATION

HALL

RECEPTION ROOM

KITCHEN

STAIRS & LANDING

BEDROOM 1

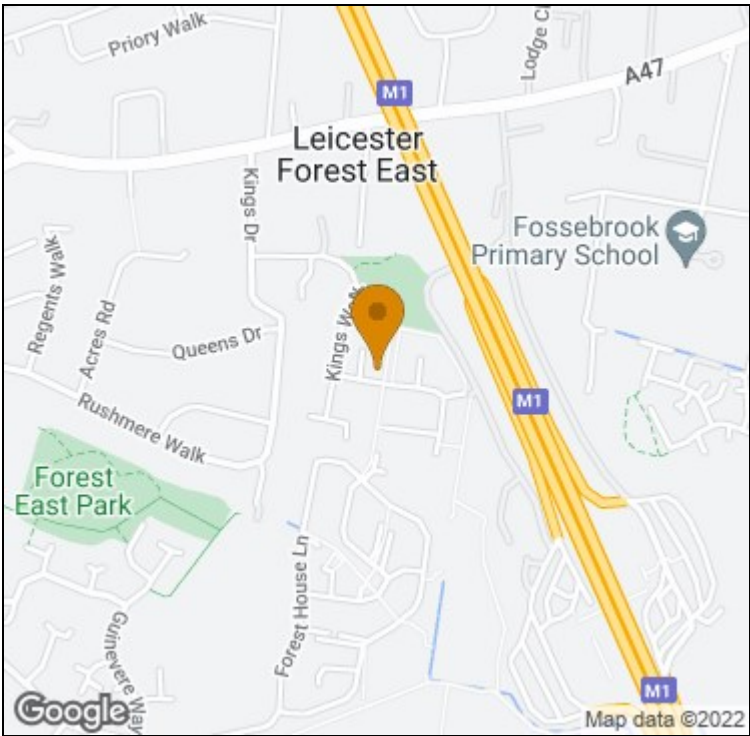
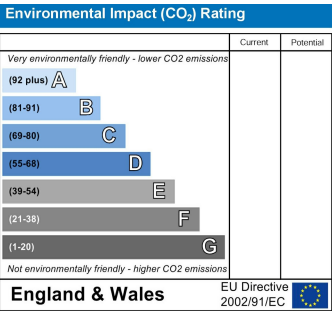
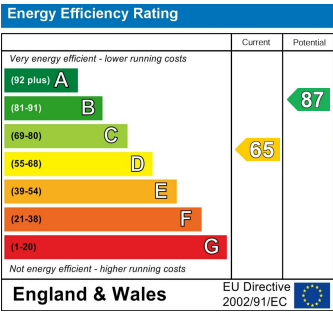
BEDROOM 2

BEDROOM 3

BATHROOM

CONSERVATORY

REAR GARDEN



t: 01163660990 e: oadby@newtonfallowell.co.uk
www.newtonfallowell.co.uk